



LIMEWOOD PLACE

SHERFIELD ON LODDON

WELCOME



Dear Customer,

We are committed to our customers living in a safe, warm and sustainable home. We've been proudly building communities for over 90 years across the south and south-west of England.

Our focus is on the quality of our homes, our neighbourhoods and the service we provide to our customers.

Our communities' matter, we invest in community services and projects that benefit our customers and communities.

Everyone at Abri wishes you success in your journey to find your new home and our dedicated team will look after you every step of the way.

Best wishes,

Gary Orr

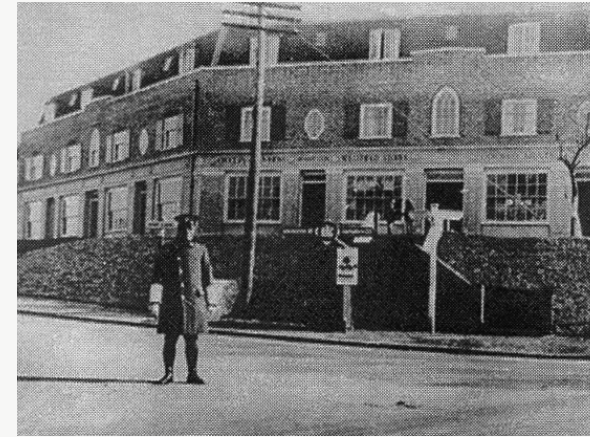
Group Chief Executive

OUR HERITAGE

Our story dates back to 1925, when Herbert Collins saw a desperate need for affordable housing in Southampton and decided to do something about it. Collins set up Swaythling Housing Society, the first of its type to be established in Southampton, and we haven't looked back since.

Collins had a vision; to build self-contained communities with a good balance of housing and infrastructure, where everyone had everything they needed to succeed in one place. While times might have changed a bit since then, our mission certainly hasn't. We're still just as passionate about tackling the housing crisis and we will never stop working to build safe, inclusive and prosperous communities for all; young, old and everyone in between.

Today, Abri is one of the largest housing associations in the south and south-west of England continuing to tackle the housing crisis with our customers at the heart of our mission.



OUR CUSTOMERS

Here are just some of our many happy homeowners:



“ We were given a tour of the site and worked out that my finances could stretch to a three-bedroom house, which meant my daughters could have their own rooms. They showed me plans to a double-fronted property which was exactly what I wanted, the type of house I would draw as a kid but never thought I could afford. We fell in love straight away.”

Louisa Kennedy, Causeway Farm



“ The process of buying through Abri Homes was really straightforward. It took a couple of months, but I was happy to be patient as it meant I was able to get on the ladder by myself. My mortgage is around £250, and my rent is less than £400, so my outgoings here are less than I was saving, which is great.”

Matthew Taylor, Daedalus Village



“ Shared Ownership is a God-send. There's no way we'd have the home we do now without Shared Ownership.” After 16 years in the Spanish sun, retired couple Jane and Ray Light made the decision to return to the UK to be closer to their grandchildren.

Jane and Ray Light, Oakfield Grove

COMMUNITY LIVING

Our investment in the community underpins our core purpose as a housing provider: to provide safe, warm homes for as many people as possible, and create thriving communities too. We are invested long-term and committed to place shaping.

CAFÉ 1759, BORDON

Café 1759 is a not-for-profit community café, supported by volunteers. This means we're able to keep our prices low and reinvest the money we make into the café and our local community, allowing us to provide activities, support volunteers and promote health and wellbeing in Bordon.

EMPLOYMENT, SUPPORT AND TRAINING TEAM

Our Employment, Support and Training (EST) team support customers year-round by providing opportunities to learn new skills, find suitable work, develop self employment opportunities and attend courses. We're proud to have supported over 2,000 people through training.



WOODGATE, PEASE POTTAGE

Our joint venture partnership between Abri Group and Thakeham Group will create places people want to call home. This exciting development will include over 600 new homes, a primary school, village shop, coffee shop, community centre, plenty of parks and a pavilion.

GOOD GRUB CLUB

The Good Grub Club runs throughout August in Southampton and Slough, offering families the chance to make some 'Good Grub' with hands-on activities and a free nutritious lunch provided. Families are also given a recipe bag full of fresh fruit to take away and a main meal to cook at home.

ROUND ABOUT CAFÉ

The Round About Café is at the heart of the Mansbridge community, and the colleagues and volunteers who dedicate their time to make it a success are passionate about doing what they can to support health and wellbeing.

Over the years they have delivered Kids Can Cook sessions, helped universities with research, run Seniors Afternoon Tea events, led community walks and much more.



SUSTAINABILITY



We recognise the need to future proof our homes to meet the needs and aspirations of our customers



It's all about the future and renewable technologies. We recognise the need to future proof our homes to meet the needs and aspirations of our customers. That's why we're making the eradication of fuel poverty a priority and meeting significantly higher environmental standards, which in turn reduces our customer's fuel bills.

We are an organisation committed to Modern Methods of Construction (MMC) and consider all of our sites for their suitability for MMC, before considering traditional construction. This supports faster delivery of new homes, reduces waste and drives quality, whilst reducing health and safety risks during the construction process. Our approach will overcome skills shortages and supports our commitment to sustainability, whilst helping to solve the housing crisis in the long-term.



QUEBEC PARK - SETTING THE BENCHMARK

An innovative and fast-growing new town with sustainability, design and healthy living at its heart.



Quebec Park was a £17 million project to deliver 107 homes, including 34 affordable homes, in Whitehill and Bordon. The project was challenged to develop homes with high levels of sustainability and exemplary design, and to set the benchmark for future development across the wider area.

We were delighted to win the commission to deliver the homes through a competitive bid process managed by Homes England. At the time, Whitehill and Bordon was one of 10 Government sponsored 'Eco-towns'.

Homes have been designed to meet Lifetime Homes Standards resulting in large internal areas, parking spaces within 50 metres of homes, level thresholds, large ground floor WC/utility/wet rooms, wide porches and generous circulation spaces. The homes have a variety of layouts to suit different uses and the majority are orientated east-west, ensuring that they have private sunny gardens and well-lit interiors.

Now fully complete, this award-winning development has been recognised as best-in-class for a sustainable, affordable new community.

SITE PLAN

- The Test
2 bedroom house
- The Itchen
3 bedroom house
- The Itchen II
3 bedroom house
- The Kent
4 bedroom house
- The Tyne
5 bedroom house
- Garage



This site plan is for illustrative purposes only. Whilst every effort has been made to ensure that the information is correct, it is a guide and Abri Homes reserves the right to amend as necessary without notice.

SPECIFICATION

PLOTS 1 – 5 & 10 – 13

Each of our beautiful new homes is fitted with a wealth of professionally designed, high-quality appliances and features that make your new home even more special. Your property will be covered by a 10-year NHBC structural warranty.

KITCHEN

- Symphony Plaza Porcelain fitted kitchen units, doors and worktops and upstand
- Splashback behind hob
- 1.5 bowl stainless steel sink and mixer tap
- Built-in Zanussi single stainless-steel fan oven, hob and chimney hood

LIGHTING AND ELECTRICAL FINISHES

- Pendant lighting to living room, hallway, landing and bedrooms
- Chrome downlights to kitchen and bathroom
- Ample power sockets throughout
- Telephone point to kitchen, hall, living room and master bedroom
- Shaver socket to bathroom
- TV aerial point to kitchen, living room and bedrooms

- Chrome doorbell
- Fibre broadband connection and wired for Cat 5e network sockets to kitchen, living room and bedrooms

BATHROOMS

- Roca white sanitaryware
- Roca dual-flush WC with soft close seat
- Full-length shower screen
- Thermostatic shower over bath
- Vado chrome taps
- Porcelanosa tiled splashback, full height above bath and shower with splashback above basin

HEATING AND WATER SYSTEMS

- Radiators with thermostatic controls
- Chrome heated towel rail to bathroom and ensuite
- Vaillant combination boiler

INTERNAL FINISHES

- White matt emulsion finishes to walls and ceilings
- Double-glazed windows
- Mains-operated smoke and carbon monoxide detector
- Vinyl flooring to hall, kitchen, bathroom and cloakroom
- Carpet to living room, hallway, landing, stairs and bedrooms

EXTERNAL FINISHES

- Patio area and turfed rear garden
- External tap
- External light to front and rear of each house

Abri Homes may occasionally substitute, change or remove items within this specification. We reserve the right to make these changes as necessary, without notice, and their accuracy or completeness is not guaranteed.

SPECIFICATION

PLOTS 14 & 15

Each of our beautiful new homes is fitted with a wealth of professionally designed, high-quality appliances and features that make your new home even more special. Your property will be covered by a 10-year NHBC structural warranty.

KITCHEN

- Symphony Princeton Pearl Grey fitted kitchen units and Chalet Oak worktops with matching upstand
- Splashback behind hob
- 1.5 bowl stainless steel sink with mixer tap
- Built-in AEG brushed stainless steel double oven, five ring gas hob and chimney hood
- Integrated AEG fridge freezer
- Integrated AEG dishwasher

UTILITY ROOM

- Symphony Princeton Pearl Grey kitchen units and Chalet Oak worktops with matching upstand
- Stainless steel single bowl sink with mixer tap
- Freestanding AEG washer dryer

LIGHTING AND ELECTRICAL FINISHES

- Pendant lighting to living room, dining room, hallway, landing and bedrooms
- Chrome downlights to kitchen, utility room, bathroom, ensuite and cloakroom
- Baton light to garage
- Ample power sockets throughout
- Telephone point to hall, living room, kitchen and selected bedrooms
- Shaver socket to bathroom and ensuite
- TV aerial point to living room, kitchen and bedrooms
- Chrome doorbell
- Fibre broadband connection and wired for Cat 5e network sockets to kitchen, living room and bedrooms

BATHROOMS AND CLOAKROOMS

- Roca white sanitaryware
- Roca dual-flush WC with soft close seat
- Full-length shower screen
- Thermostatic shower over bath
- Vado chrome taps
- Porcelanosa tiled splashback, full height above bath and shower with splashback above basin

HEATING AND WATER SYSTEMS

- Radiators with thermostatic controls
- Chrome heated towel rail to bathroom and ensuite

INTERNAL FINISHES

- White matt emulsion finishes to walls and ceilings
- Double-glazed windows
- Mains-operated smoke and carbon monoxide detector
- Porcelanosa tile flooring to kitchen, hall, cloakroom, bathroom and ensuite
- Grey carpet to living room, dining room, hallway, landing, stairs and bedrooms

EXTERNAL FINISHES

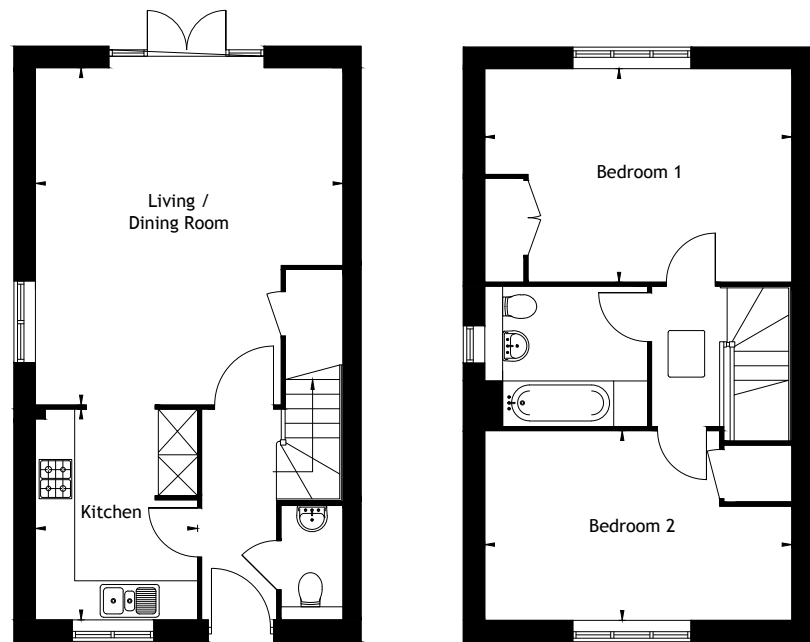
- Patio area and turfed rear garden
- External tap
- External light to front and rear of each house

Abri Homes may occasionally substitute, change or remove items within this specification. We reserve the right to make these changes as necessary, without notice, and their accuracy or completeness is not guaranteed.



THE TEST

Plots 1, 2*



*Handed

Images may be computer-generated and are for illustrative purposes only, so may not be representative of exact plots. Images may be of a different model of home. Floor plans are not to scale and are indicative only. Location of windows, doors, kitchen units and appliances may differ. Doors may swing in the opposite direction to that shown on selected houses. Dimensions, which are taken from the indicated points of measurement, are for guidance only and are not intended to be used to calculate space for items of furniture. Total areas are provided as gross internal areas and are subject to variance. Please note, some plots may be handed, speak to a Sales Executive for further information.

2 BEDROOM HOUSE

Living / Dining Room

4.70m x 5.15m (15'5 x 16'11)

Kitchen

2.48m x 3.22m (8'2 x 10'7)

Bedroom 1

4.70m x 3.26m (15'5 x 10'8)

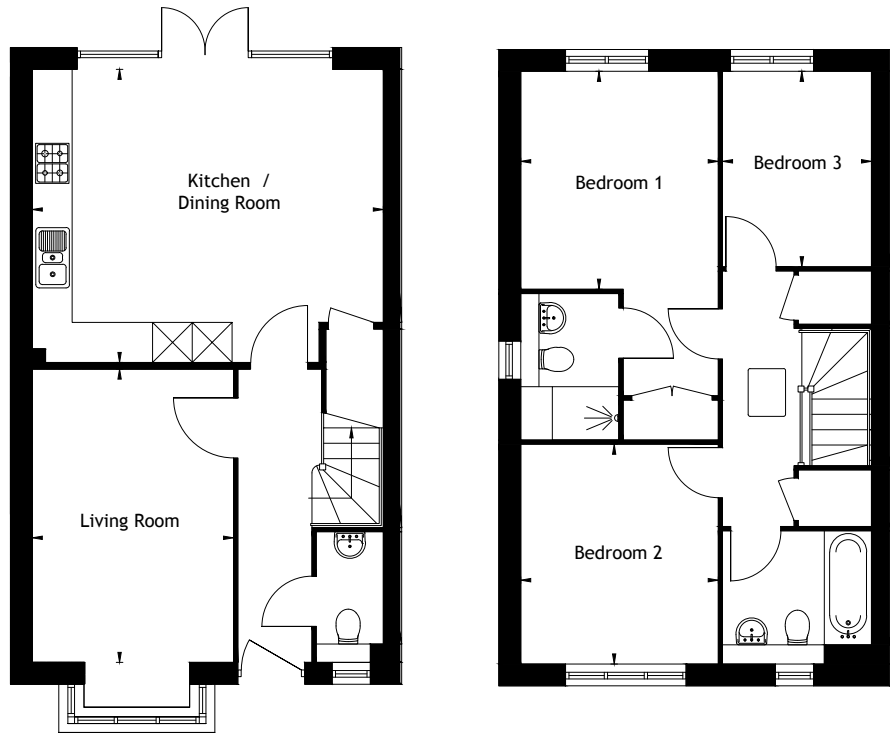
Bedroom 2

4.70m x 2.90m (15'5 x 9'6)



THE ITCHEN

Plots 3, 4*, 10, 11*



*Handed

3 BEDROOM HOUSE

Kitchen / Dining Room
5.26m x 4.38m (17'3 x 14'5)

Living Room
3.01m x 4.40m (9'11 x 14'5)

Bedroom 1
2.96m x 3.27m (9'9 x 10'9)

Bedroom 2
2.96m x 3.29m (9'9 x 10'10)

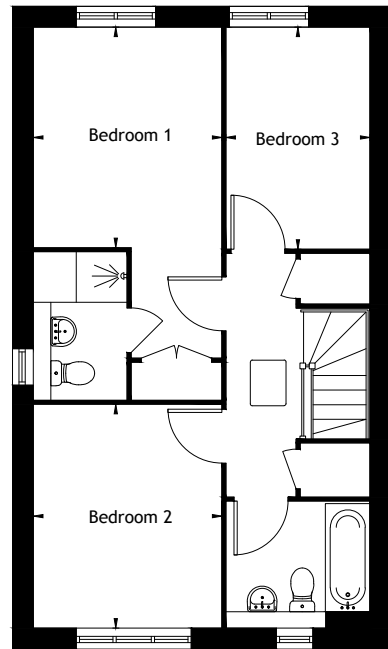
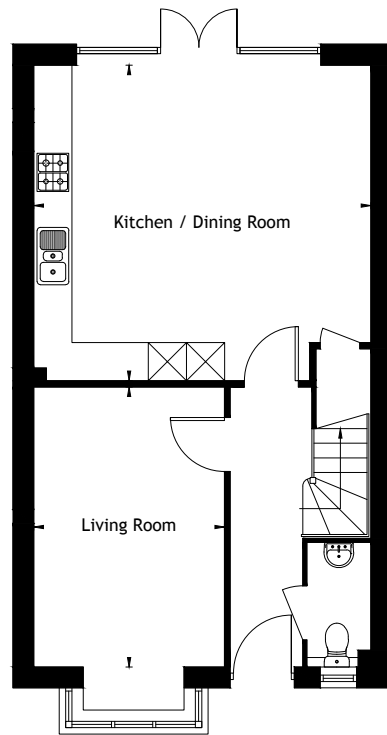
Bedroom 3
2.23m x 2.93m (7'4 x 9'7)

Images may be computer-generated and are for illustrative purposes only, so may not be representative of exact plots. Images may be of a different model of home. Floor plans are not to scale and are indicative only. Location of windows, doors, kitchen units and appliances may differ. Doors may swing in the opposite direction to that shown on selected houses. Dimensions, which are taken from the indicated points of measurement, are for guidance only and are not intended to be used to calculate space for items of furniture. Total areas are provided as gross internal areas and are subject to variance. Please note, some plots may be handed, speak to a Sales Executive for further information.



THE ITCHEN II

Plot 5



3 BEDROOM HOUSE

Kitchen / Dining Room
5.29m x 4.95m (17'4 x 16'3)

Living Room
2.99m x 4.40m (9'10 x 14'5)

Bedroom 1
2.96m x 3.46m (9'9 x 11'4)

Bedroom 2
2.96m x 3.52m (9'9 x 11'7)

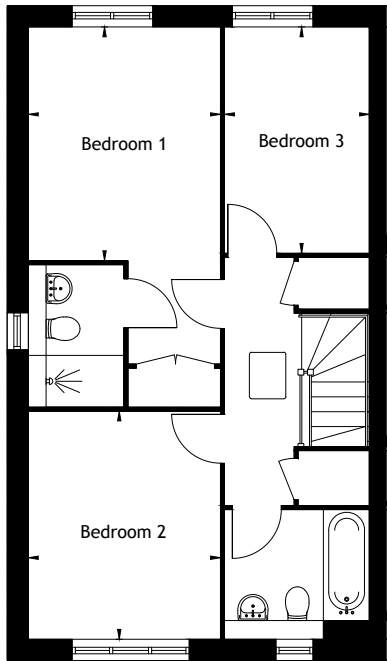
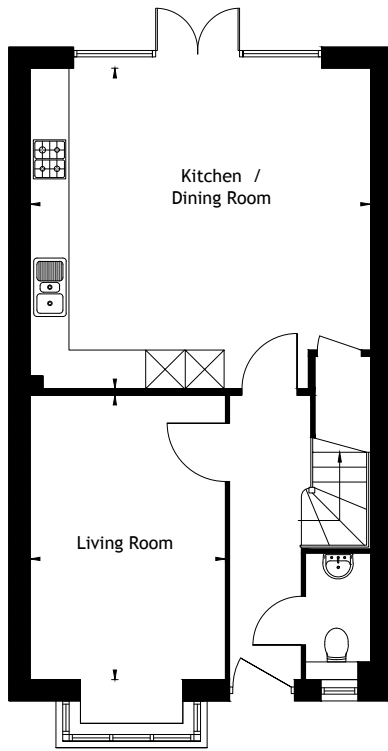
Bedroom 3
2.26m x 3.49m (7'5 x 11'5)

Images may be computer-generated and are for illustrative purposes only, so may not be representative of exact plots. Images may be of a different model of home. Floor plans are not to scale and are indicative only. Location of windows, doors, kitchen units and appliances may differ. Doors may swing in the opposite direction to that shown on selected houses. Dimensions, which are taken from the indicated points of measurement, are for guidance only and are not intended to be used to calculate space for items of furniture. Total areas are provided as gross internal areas and are subject to variance. Please note, some plots may be handed, speak to a Sales Executive for further information.



THE ITCHEN II

Plot 12, 13*



3 BEDROOM HOUSE

Kitchen / Dining Room
5.26m x 4.94m (17'3 x 16'2)

Living Room
3.01m x 4.40m (9'11 x 14'5)

Bedroom 1
2.96m x 3.60m (9'9 x 11'10)

Bedroom 2
2.96m x 3.52m (9'9 x 11'7)

Bedroom 3
2.23m x 3.49m (7'4 x 9'7)

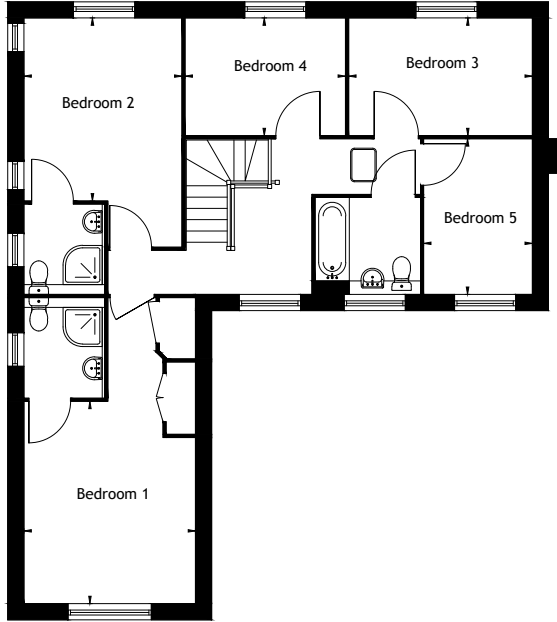
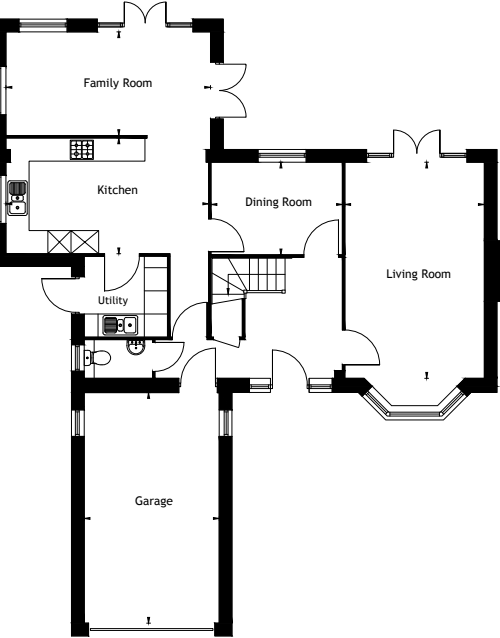
*Handed

Images may be computer-generated and are for illustrative purposes only, so may not be representative of exact plots. Images may be of a different model of home. Floor plans are not to scale and are indicative only. Location of windows, doors, kitchen units and appliances may differ. Doors may swing in the opposite direction to that shown on selected houses. Dimensions, which are taken from the indicated points of measurement, are for guidance only and are not intended to be used to calculate space for items of furniture. Total areas are provided as gross internal areas and are subject to variance. Please note, some plots may be handed, speak to a Sales Executive for further information.



THE TYNE

Plot 14



5 BEDROOM HOUSE

Family Room
5.29m x 2.68m (17'4 x 8'10)

Kitchen
5.25m x 3.00m (17'3 x 9'10)

Dining Room
3.41m x 2.39m (11'2 x 7'10)

Living Room
3.61m x 5.59m (11'10 x 18'4)

Bedroom 1
4.12m x 3.49m (13'6 x 11'5)

Bedroom 2
3.22m x 3.73m (10'7 x 12'3)

Bedroom 3
3.74m x 2.39m (10'8 x 7'10)

Bedroom 4
3.26m x 2.39m (10'8 x 7'10)

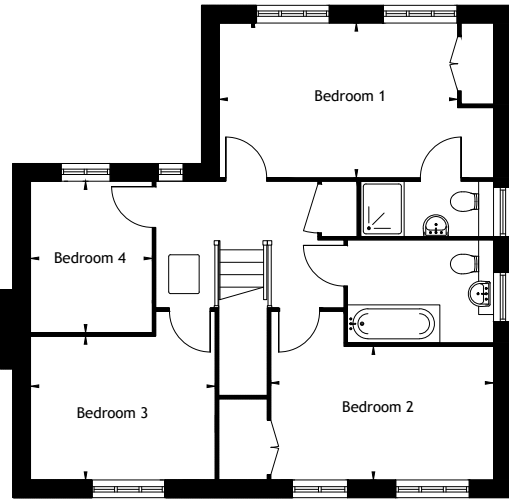
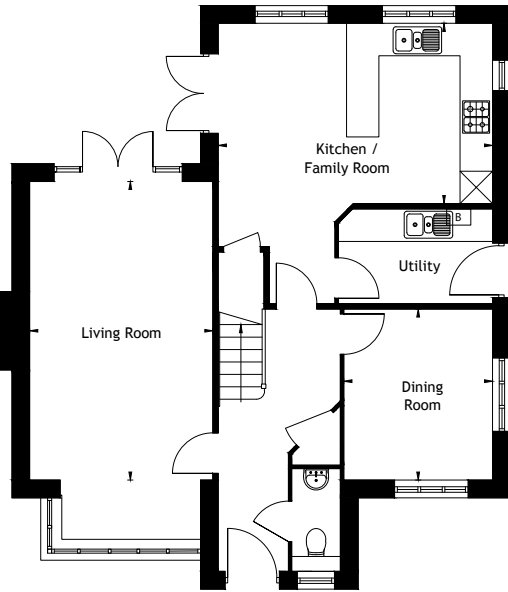
Bedroom 5
3.17m x 2.21m (10'5 x 7'3)

Images may be computer-generated and are for illustrative purposes only, so may not be representative of exact plots. Images may be of a different model of home. Floor plans are not to scale and are indicative only. Location of windows, doors, kitchen units and appliances may differ. Doors may swing in the opposite direction to that shown on selected houses. Dimensions, which are taken from the indicated points of measurement, are for guidance only and are not intended to be used to calculate space for items of furniture. Total areas are provided as gross internal areas and are subject to variance. Please note, some plots may be handed, speak to a Sales Executive for further information.



THE KENT

Plot 15



4 BEDROOM HOUSE

Kitchen / Family Room
5.07m x 3.33m (16'8 x 10'11)

Living Room
3.38m x 5.52m (11'1 x 18'1)

Dining Room
2.75m x 3.16m (9'0 x 10'11)

Bedroom 1
4.40m x 2.84m (14'5 x 9'4)

Bedroom 2
4.11m x 2.47m (13'6 x 8'1)

Bedroom 3
3.41m x 2.65m (11'2 x 8'8)

Bedroom 4
2.25m x 2.80m (7'5 x 9'2)

Images may be computer-generated and are for illustrative purposes only, so may not be representative of exact plots. Images may be of a different model of home. Floor plans are not to scale and are indicative only. Location of windows, doors, kitchen units and appliances may differ. Doors may swing in the opposite direction to that shown on selected houses. Dimensions, which are taken from the indicated points of measurement, are for guidance only and are not intended to be used to calculate space for items of furniture. Total areas are provided as gross internal areas and are subject to variance. Please note, some plots may be handed, speak to a Sales Executive for further information.




WE ARE MORE THAN JUST A HOUSING
PROVIDER; WE ARE AN ORGANISATION
WITH A HEART, PUTTING OUR
CUSTOMERS AND PEOPLE FIRST AND
INVESTING IN OUR COMMUNITIES.

abrihomes.co.uk

0800 145 6663

 @AbriHomes

 @AbriHomesUK

 Abri.Homes



0800 telephone numbers are free of charge from BT landlines. Non-BT customers and mobile phone users should contact their service providers for information about the cost of calls.

Images may be computer generated and are for illustrative purposes only, so may not be representative of exact plots. Images may be of a different model of home. Individual specification, fittings and features such as windows, brick, carpets, paint and other material colours may vary. Any furnishings are virtually staged and not included in any sale, but are for guidance only.

Abri and Abri Homes are trading names of Abri Group Limited (a Registered Society under the Co-operative and Community Benefit Societies Act 2014, no. 8537 and a charitable registered provider with the Regulator of Social Housing no. L4172) and The Swaythling Housing Society Limited (a Registered Society under the Co-operative and Community Benefit Societies Act 2014 no. 10237R and a registered provider with the Regulator of Social Housing no. L0689). Registered office: Collins House, Bishopstoke Road, Eastleigh, Hampshire SO50 6AD.

Authorised and regulated by the Financial Conduct Authority.

The Swaythling Housing Society Limited provides management services for subsidiaries in the Abri group. Further corporate information is available at abri.co.uk

Correct at time of creation - November 2021